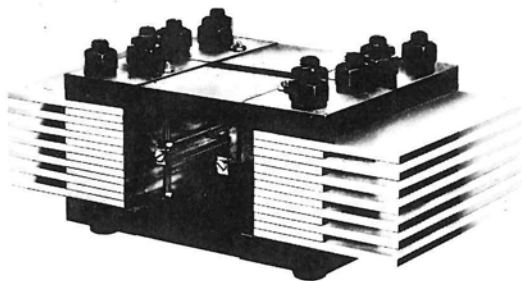


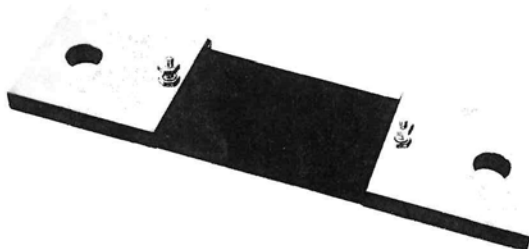


Type 140's represent the latest advance in General Electric shunt design. Far lighter than earlier models—smaller, too—these 50MV and 100MV shunts handle easier, install faster, and take up less space.

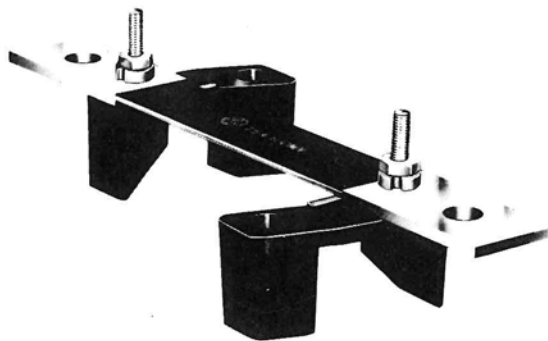
These 140 shunts feature heavy, full-length manganin strips, a GE exclusive that makes for greater structural strength. Silver-plated contact terminals, standard on 140's rated 3000 amps or higher, help assure low resistance and trouble-free contacts.



Type 140, 100-millivolt, 10-kiloampere shunt



Type 140, 100-millivolt, 1000-ampere shunt



Type 140, 100-millivolt, 75-ampere shunt with base

**ACCURACY**

± 1/4 percent Calibrated Accuracy.

**LEADS**

Standard 7-foot shunt leads for back-of-board wiring have machined terminals and are flamenol (nonflammable) insulated suitable for operating temperatures up to 75 degrees C. Insulation is suitable for line-to-ground voltages up to 600 volts maximum.

**MINIMUM RATING**

10 amperes, 50 millivolts or 100 millivolts.

**MAXIMUM RATING**

10 kiloamperes, 50 millivolts or 100 millivolts.

**Shunts**

| Current Rating in Amp | Milli-volt Rating | Catalog Number |
|-----------------------|-------------------|----------------|
|-----------------------|-------------------|----------------|

| Milli-volt Rating | Catalog Number |
|-------------------|----------------|
|-------------------|----------------|

**WITH BASE**

|     |    |                 |
|-----|----|-----------------|
| 10  | 50 | 50-140 031 MTAA |
| 15  | 50 | 50-140 031 NDAA |
| 20  | 50 | 50-140 031 NGAA |
| 30  | 50 | 50-140 031 NLAA |
| 40  | 50 | 50-140 031 NPAA |
| 50  | 50 | 50-140 031 NTAA |
| 60  | 50 | 50-140 031 NWAA |
| 75  | 50 | 50-140 031 PBAA |
| 80  | 50 | 50-140 031 PDAA |
| 100 | 50 | 50-140 031 PKAA |
| 150 | 50 | 50-140 031 PZAA |
| 200 | 50 | 50-140 031 RLAA |
| 250 | 50 | 50-140 031 RSAA |
| 300 | 50 | 50-140 031 RXAA |
| 400 | 50 | 50-140 031 SCAA |
| 500 | 50 | 50-140 031 SFAA |
| 600 | 50 | 50-140 031 SJAA |
| 800 | 50 | 50-140 031 SNAA |
| 1Ka | 50 | 50-140 031 SSAA |

|     |                 |
|-----|-----------------|
| 100 | 50-140 034 MTAA |
| 100 | 50-140 034 NDAA |
| 100 | 50-140 034 NGAA |
| 100 | 50-140 034 NLAA |
| 100 | 50-140 034 NPAA |
| 100 | 50-140 034 NTAA |
| 100 | 50-140 034 NWAA |
| 100 | 50-140 034 PBAA |
| 100 | 50-140 034 PDAA |
| 100 | 50-140 034 PKAA |
| 100 | 50-140 034 PZAA |
| 100 | 50-140 034 RLAA |
| 100 | 50-140 034 RSAA |
| 100 | 50-140 034 RXAA |
| 100 | 50-140 034 SCAA |
| 100 | 50-140 034 SFAA |
| 100 | 50-140 034 SJAA |
| 100 | 50-140 034 SNAA |
| 100 | 50-140 034 SSAA |

**WITHOUT BASE**

|       |    |                  |
|-------|----|------------------|
| 75    | 50 | 50-140 011 PBAA  |
| 80    | 50 | 50-140 011 PDAA  |
| 100   | 50 | 50-140 011 PKAA  |
| 150   | 50 | 50-140 011 PZAA  |
| 200   | 50 | 50-140 011 RLAA  |
| 250   | 50 | 50-140 011 RSAA  |
| 300   | 50 | 50-140 011 RXAA  |
| 400   | 50 | 50-140 011 SCAA  |
| 500   | 50 | 50-140 011 SFAA  |
| 600   | 50 | 50-140 011 SJAA  |
| 800   | 50 | 50-140 011 SNAA  |
| 1Ka   | 50 | 50-140 011 SSAA  |
| 1.2Ka | 50 | 50-140 011 SUAA  |
| 1.5Ka | 50 | 50-140 011 TCAA  |
| 2.0Ka | 50 | 50-140 011 TMAA  |
| 2.5Ka | 50 | 50-140 011 TUAÄ  |
| 3Ka   | 50 | 50-140 021 UAAA* |
| 4Ka   | 50 | 50-140 021 UEAA* |
| 5Ka   | 50 | 50-140 021 UJAA* |
| 6Ka   | 50 | 50-140 021 UPAA* |
| 8Ka   | 50 | 50-140 021 UWAA* |
| 10Ka  | 50 | 50-140 021 UZAA* |

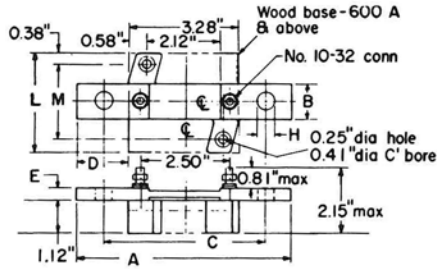
|     |                  |
|-----|------------------|
| 100 | 50-140 014 PBAA  |
| 100 | 50-140 014 PDAA  |
| 100 | 50-140 014 PKAA  |
| 100 | 50-140 014 PZAA  |
| 100 | 50-140 014 RLAA  |
| 100 | 50-140 014 RSAA  |
| 100 | 50-140 014 RXAA  |
| 100 | 50-140 014 SCAA  |
| 100 | 50-140 014 SFAA  |
| 100 | 50-140 014 SJAA  |
| 100 | 50-140 014 SNAA  |
| 100 | 50-140 014 SSAA  |
| 100 | 50-140 014 SUAA  |
| 100 | 50-140 014 TCAA  |
| 100 | 50-140 014 TMAA  |
| 100 | 50-140 014 TUAÄ  |
| 100 | 50-140 024 UAAA* |
| 100 | 50-140 024 UEAA* |
| 100 | 50-140 024 UJAA* |
| 100 | 50-140 024 UPAA* |
| 100 | 50-140 024 UWAA* |
| 100 | 50-140 024 UZAA* |

\* Silver plating is supplied as standard on these ratings. Silver plating is available on all ratings. When ordering with silver plating select the catalog number desired for the comparable unplated shunt and change digit #5 as follows:

- 50-1400\* 4SNAA
- 1=unplated, no base
  - 2=silver plated, no base
  - 3=unplated, with base
  - 4=silver plated, with base

# WESCHLER INSTRUMENTS

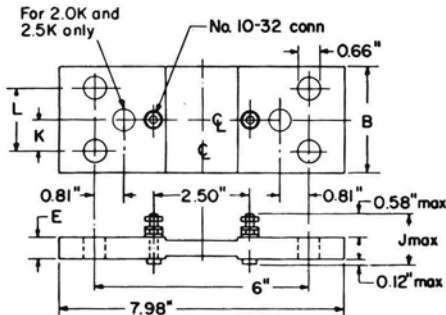
## DIMENSIONS



Note: all dimensions are nominal except "max." dimensions.

| Rating in Amperes | A    | B    | C   | D    | E    | H    | L    | M    |
|-------------------|------|------|-----|------|------|------|------|------|
| 10, 15            |      | 0.45 | 4.5 | 1.41 | 0.12 | 0.28 | 2.88 | 2.12 |
| 20                |      | 0.59 | 4.5 | 1.41 |      | 0.28 | 2.88 | 2.12 |
| 30                |      | 0.45 | 4.5 | 1.41 | 0.19 | 0.28 | 3.88 | 3.12 |
| 40                |      | 0.59 | 4.5 | 1.41 | 0.19 | 0.28 | 3.88 | 3.12 |
| 50                |      | 0.71 | 4.5 | 1.41 |      | 0.41 | 2.88 | 2.12 |
| 60                |      | 0.85 | 4.5 | 1.41 |      | 0.41 | 3.88 | 3.12 |
| 75                |      | 1.06 | 4.5 | 1.41 | 0.14 | 0.41 | 3.88 | 3.12 |
| 80                | 5.98 | 1.13 | 4.5 | 1.41 |      | 0.41 | 3.88 | 3.12 |
| 100               |      | 1.41 | 4.5 | 1.41 |      | 0.41 | 3.88 | 3.12 |
| 150               |      | 1.06 | 4.5 | 1.41 | 0.19 | 0.53 | 3.88 | 3.12 |
| 200               |      | 1.41 | 4.5 | 1.41 |      | 0.53 | 3.88 | 3.12 |
| 250               |      | 1.77 | 4.5 | 1.41 |      | 0.53 | 3.88 | 3.12 |
| 300               |      | 1.41 | 4.5 | 1.41 | 0.29 | 0.53 | 3.88 | 3.12 |
| 400               |      | 1.41 | 4.5 | 1.41 |      | 0.53 | 3.88 | 3.12 |
| 500               |      | 1.77 | 4.5 | 1.41 | 0.34 | 0.53 | 3.88 | 3.12 |
| 600               |      | 2.14 | 6.0 | 2.41 |      | 0.66 | 5.00 | 4.24 |
| 800               | 7.98 | 2.28 | 6.0 | 2.41 | 0.44 | 0.66 | 5.00 | 4.24 |
| 1 K               |      | 2.83 | 6.0 | 2.41 |      | 0.66 | 5.00 | 4.24 |

Standard switchboard and portable shunts with base  
50 MV—Up to 1.0KA\*  
A3148K32



| Rating in Amperes | B    | E    | L    | K    | J    |
|-------------------|------|------|------|------|------|
| 1.5 K             | 3.02 | 0.59 | 1.75 | 0.88 | 1.30 |
| 2.0 K             | 4.04 | 0.59 | 2.50 | 1.25 | 1.30 |
| 2.5 K             | 3.92 | 0.74 | 2.50 | 1.25 | 1.45 |

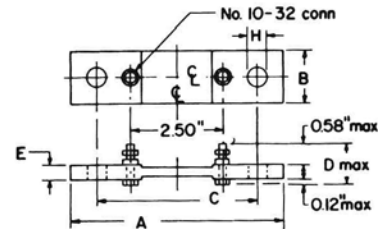
Standard switchboard shunts without base  
50 MV—Up to 2.5KA†  
A3148K12

## \*\*Shunt Leads

| Length in Feet | Resistance in Ohms | Catalog Number |
|----------------|--------------------|----------------|
| 3              | 0.010              | 7605K12747     |
| 5              | .066               | 4120835 G011   |
| 5              | .066               | 4120835 G012   |
| 5              | .066               | 4120835 G019   |
| 7              | .063               | 4120590 G005 ⊕ |
| 10             | .035               | 7605K12722     |
| 15             | .053               | 7605K12700     |
| 20             | .070               | 7605K12701     |
| 25             | .089               | 7605K12702     |
| 30             | .106               | 7605K12703     |
| 35             | .124               | 7605K12704     |
| 40             | .142               | 7605K12705     |
| 45             | .159               | 7605K12706     |
| 50             | .177               | 7605K12707     |
| 55             | .195               | 7605K12759     |
| 65             | .230               | 7605K12761     |
| 80             | .283               | 7605K12763     |
| 95             | .336               | 7605K12710     |
| 110            | .390               | 7605K12765     |
| 120            | .425               | 7605K12766     |
| 125            | .443               | 7605K12712     |
| 140            | .496               | 7605K12768     |
| 170            | .602               | 7605K12770     |
| 200            | .708               | 7605K12715     |
| 225            | .797               | 7605K12716     |

Contact Company for longer leads.

⊕ Standard shunt lead for use with switchboard indicating instruments.



| Rating in Amperes | A    | B    | C   | D    | E    | H    |
|-------------------|------|------|-----|------|------|------|
| 75                |      | 1.06 | 4.5 |      |      | 0.41 |
| 80                |      | 1.13 | 4.5 | 0.85 | 0.14 | 0.41 |
| 100               |      | 1.41 | 4.5 |      |      | 0.41 |
| 150               |      | 1.06 | 4.5 | 0.90 | 0.19 | 0.53 |
| 200               | 5.98 | 1.41 | 4.5 |      |      | 0.53 |
| 250               |      | 1.18 | 4.5 | 1.00 | 0.29 | 0.53 |
| 300               |      | 1.41 | 4.5 |      |      | 0.53 |
| 400               |      | 1.41 | 4.5 |      |      | 0.53 |
| 500               |      | 1.77 | 4.5 | 1.05 | 0.34 | 0.53 |
| 600               |      | 2.12 | 6   |      |      | 0.66 |
| 800               | 7.98 | 2.26 | 6   | 1.15 | 0.44 | 0.66 |
| 1 K               |      | 2.83 | 6   |      |      | 0.66 |
| 12K               |      | 2.83 | 6   | 1.20 | 0.49 | 0.66 |

Standard switchboard shunts without base  
50 MV—Up to 1.2KA†  
A3148K11

\* For 100-millivolt shunt dimensions, add 2 inches to "A" and "C" dimensions and horizontal base data on dimensions tabulated above and also to the 2.5-inch dimension between terminals. For data on other shunt ratings—refer to following dimension drawings.

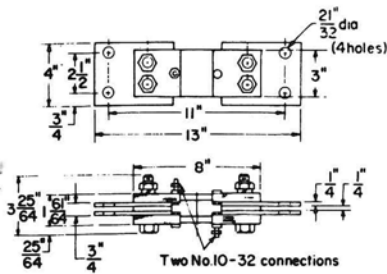
† For 100-millivolt shunt dimensions, add 2 inches to "A" and "C" dimensions tabulated above, and also to the 2.5-inch dimension between terminals.

‡ For 100-millivolt shunt, add 2 inches to the 7.98-inch, 6-inch, and 2.5-inch dimensions shown above.

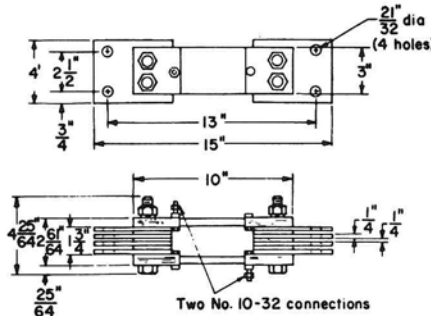


**IMPORTANT**

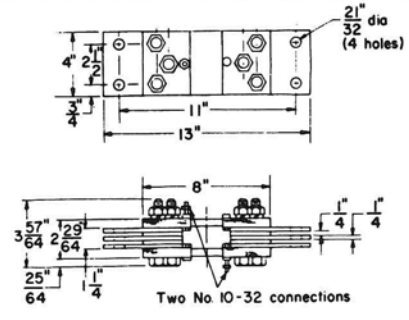
The locations of the "Two No. 10-32 connections" are variable because the instrument connections providing the most accurate results at final test are used. The connections may be on the same side or on opposite sides of the shunts shown below.



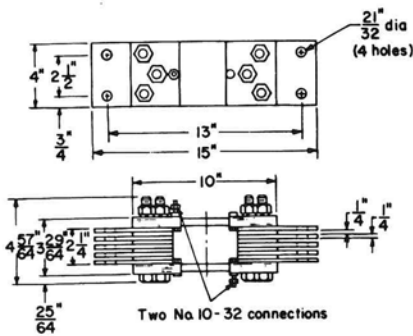
**50 MV—3.0KA Shunt**  
(Dwg. A-3148K17)



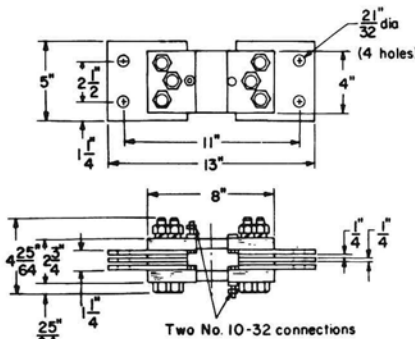
**100 MV—3.0KA Shunt**  
(Dwg. A-3148K19)



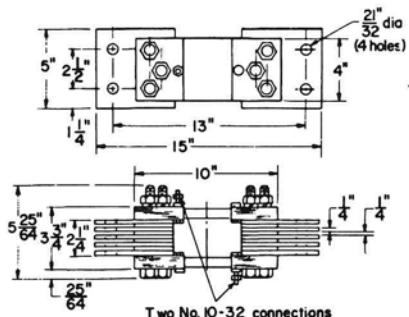
**50 MV—4.0KA Shunt**  
(Dwg. A-3148K21)



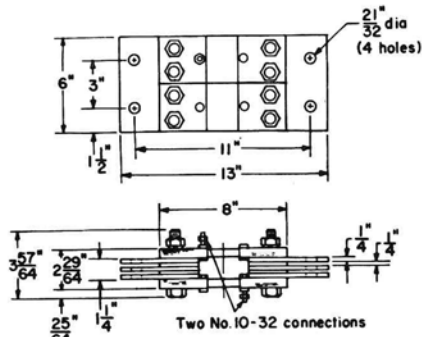
**100 MV—4.0KA Shunt**  
(Dwg. A-3148K25)



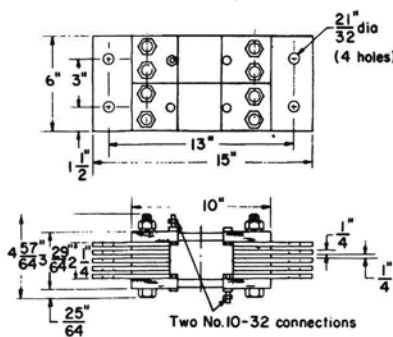
**50 MV—5.0KA Shunt**  
(Dwg. A-3148K22)



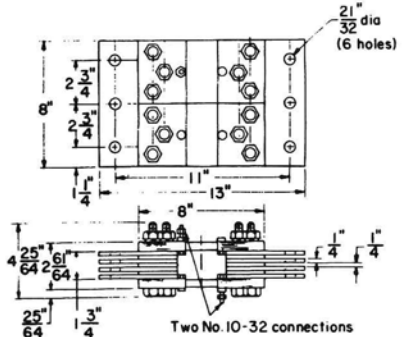
**100 MV—5.0KA Shunt**  
(Dwg. A-3148K26)



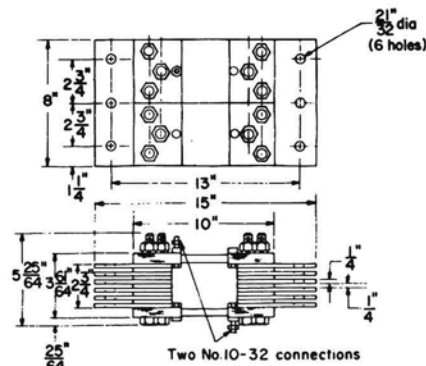
**50 MV—6.0KA Shunt**  
(Dwg. A-3148K18)



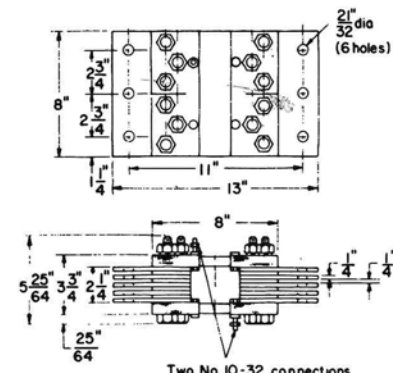
**100 MV—6.0KA Shunt**  
(Dwg. A-3148K20)



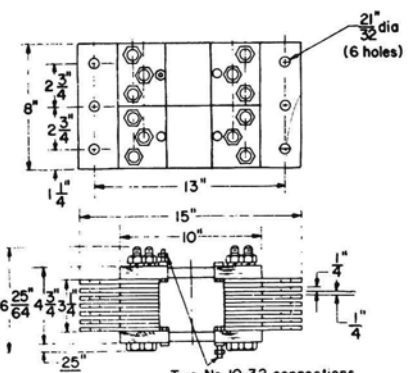
**50 MV—8.0KA Shunt**  
(Dwg. A-3148K23)



**100 MV—8.0KA Shunt**  
(Dwg. A-3148K27)



**50 MV—10.0KA Shunt**  
(Dwg. A-3148K24)



**100 MV—10.0KA Shunt**  
(Dwg. A-3148K28)